



The Green Wall Collection
Live and Artificial Walls


ambius
The Experts in Workspace
Plant Design

Making use of wall space...



Greenwalls have become extremely popular over the year and as a leading Interior Landscaping company, Ambius has the expertise to design, install and maintain any greenwall landscaping projects across the UK.

We work with businesses in all sectors, architects and designers, to create greener environments. We have the design and horticultural experience to help our clients make an impact and we welcome projects from large & small commercial clients.

Live Greenwalls and plants not only improve air quality, they also provide uplifting and calming effect on people whilst having a positive impact on mental health. Studies also show that simply having a view of greenery increases workplace productivity. We aim to transform workplace environments for the well-being of our customers and colleagues, as well as making them look great!

Plants remove up to **87%** of volatile organic components (VOCs) and toxins every 24hours.

Source: The NASA Research



Contents

LivePicture	4
Living Walls	11
Artificial Walls	15
Moss Walls	17
Feature Walls	19

LivePicture

A living picture made up of plants, they embody innovation, design and landscaping to deliver stunning effects. The frame includes an integrated watering system with reservoir to ensure that the plants are provided with water for four to six weeks.



The innovative patented construction requires no electric power. LivePicture can be easily and quickly mounted on any wall using just a few screws. LivePicture is a stylish and space-saving solution to the use of plants in any interior environment. Rooms with limited space for plant pots will benefit from wall-mounted placement of LivePicture.



LivePicture requires minimal maintenance. It uses a system of plant cassettes that are easily exchangeable. Plants can be changed with ease, for instance to reflect the season or for special occasions such as Christmas or Easter.

Benefits of LivePicture

- Exchangeable cassettes
- Water supply for 4 to 6 weeks
- Integrated watering system
- No electricity or pump required
- Quick and easy installation
- Smart and silent full and empty indicators
- Can be personalised
- Exchangeable frame
- Modern design
- Improves the room's acoustics
- Contributes to a healthy indoor climate through oxygen production and fine-dust capture

Students demonstrate **70%** greater attentiveness when they're taught in rooms containing plants.

Source: The Royal College of Agriculture in Cirencester, UK

LivePicture GO



Available Colours*



Product	Size (w x h x d)	Number of Cassettes	Weight (empty)	Volume (litres)
LivePicture GO	51.6 x 51.6 x 11.2cm	1	2.70kg	2 ltr

LivePicture 1



Available Colours*



Product	Size (w x h x d)	Number of Cassettes	Weight (empty)	Volume (litres)
LivePicture 1	72 x 72 x 7cm	1	12.0kg	14 ltr

LivePicture 2



Available Colours*



Product	Size (w x h x d)	Number of Cassettes	Weight (empty)	Volume (litres)
LivePicture 2	112 x 72 x 7cm	2	16.6kg	19 ltr

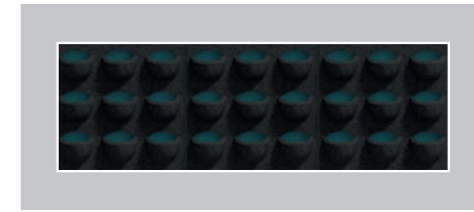
* Other (RAL) colours and personalisation with own logo, design or photo are possible on request.



Space-saving and stylish solution to use plants in the office



LivePicture 3

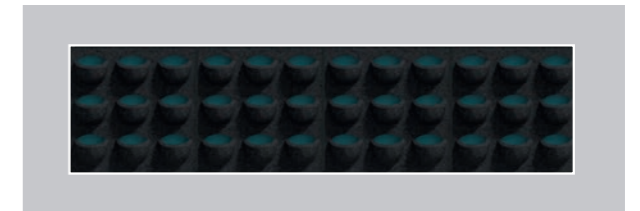


Product	Size (w x h x d)	Number of Cassettes	Weight (empty)	Volume (litres)
LivePicture 3	152 x 72 x 7cm	3	21.1kg	24 ltr

Available Colours*



LivePicture 4

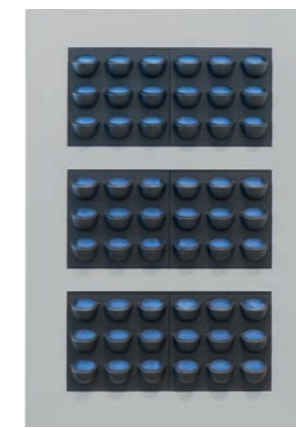


Product	Size (w x h x d)	Number of Cassettes	Weight (empty)	Volume (litres)
LivePicture 4	192 x 72 x 7cm	4	25.5kg	29 ltr

Available Colours*



LivePicture XL



Product	Size (w x h x d)	Number of Cassettes	Weight (empty)	Volume (litres)
LivePicture XL	112 x 170 x 7cm	6	35kg	38 ltr

Available Colours*



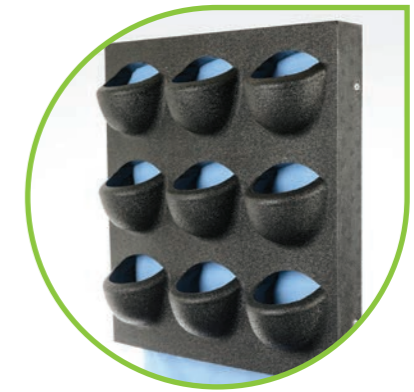
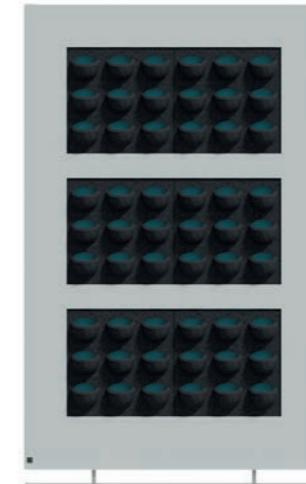
* Other (RAL) colours and personalisation with own logo, design or photo are possible on request.



Helps create
privacy and
reduces
environmental
noise



LiveDivider



Product	Size (w x h x d)	Number of Cassettes	Weight (empty)	Volume (litres)
LiveDivider	112 x 180 x 15cm	12	128kg	77 ltr

Available Colours*



White



Silver Grey

Some suggested plant ideas for your LivePicture and LiveDivider



Dracaena deremensis
"Lemon Lime"
(Touffe)



Phlebodium Aureum
Blue Star



Athyrium spicatum



Fittonia blanco
"Verde"



Anthurium andreaeanum
"Diamond Red"



Nephrolepis Exaltata
"Green Lady"
(Boston Fern)





System easily transforms walls into an attractive, living surface



Living Walls

We know that plants play an important role in our health and well-being and we continuously promote the positive effects plants have on the indoor environment.

However sometimes there just isn't enough room to utilise traditional floor planters and create the desired effect. But who said we can't make use of the walls?

Great design and innovation has enabled us to create visually stunning pieces on any wall, indoor or outdoor, using foliage. By utilising walls we can save valuable floor space, reap the benefits of plants and create that wow factor for your colleagues and customers.





Can be easily installed on new or existing walls



Living Walls

Green Walls, Living Walls or even 'Vertical Gardens' have become very popular in recent years. They look stylish and they promote the benefits of being connected to nature (*Biophilia*).

We use 2 systems at Ambius, a pocket/modular system and a tray system. Depending on your wall and the style you wish to create we can choose the best system for you.

Both systems are extremely well designed and very reliable. For large walls we can add an irrigation system to both or they can be watered manually and they both take a variety of plants so there's no compromise on design.

Ambius Living Walls are bespoke and made for you, so you can be assured you won't see the same design anywhere else.



Benefits of Live Walls

- Improves air quality
- Space saving
- Improves the rooms acoustics
- Regulates the air humidity and temperature
- Plants make people healthier, reducing stress and sickness levels.
- Enhancing your brand/image



Life-like plants offer an alternative to a live planting system



Artificial Walls

Ambius Artificial plants are some of the best on the market. Years ago 'artificial plants' used to mean 'cheap plastic looking', but no more! Our life-like plants offer an excellent alternative to a live planting wall system, that look and feel just as real.

There a number of reasons why an artificial green wall would be a more viable option, such as poor lighting, less maintenance and cost.

- Our Artificial Walls come in set sizes: 1m x 1m, 1m x 2m and 2m x 2m.
- They are available framed and unframed, using high quality softwood.
- If these options aren't suitable we can create something bespoke for you.
- Ambius Artificial Greenwalls are also available with or without FR rating (Fire Retardant).





You can take the outdoors inside & bring your walls to life



Benefits of Moss Walls

- Saves valuable floor space
- Panels available to fit any size wall
- No plumbing or wiring required
- Logo incorporation available
- Moss wall panels can be fire rated
- Very little maintenance needed

Suitable Locations

Preserved moss can only be used indoors. Bun and flat moss do not like intense cold or high humidity and should be kept away from direct sunlight or direct artificial light as this may fade the moss.



Moss Walls

Moss is fast becoming a popular green wall solution. Its vibrant green colour, tactile nature and contemporary appearance is loved by designers and clients alike.

Incorporating moss walls into workplace interiors creates a stunning visual, helping you stand out from the crowd.

The moss we use is real and has been treated with natural ingredients which preserve them so that they no longer need light or water, just a light dusting to maintain it.

Ambius can provide:

- Framed Moss pictures in 3 set sizes; 1m x 1m, 1m x 2m and 2m x 2m. *(framed in painted soft wood with polystyrene and 6mm MDF backing)*
- Entire walls, made in sections and installed by our team anywhere in the UK.
- Bespoke items, including logos, maps and wrap around letters with infill in a choice of green or coloured moss.



“ We offer bespoke solutions to suit your office ”



Feature Walls

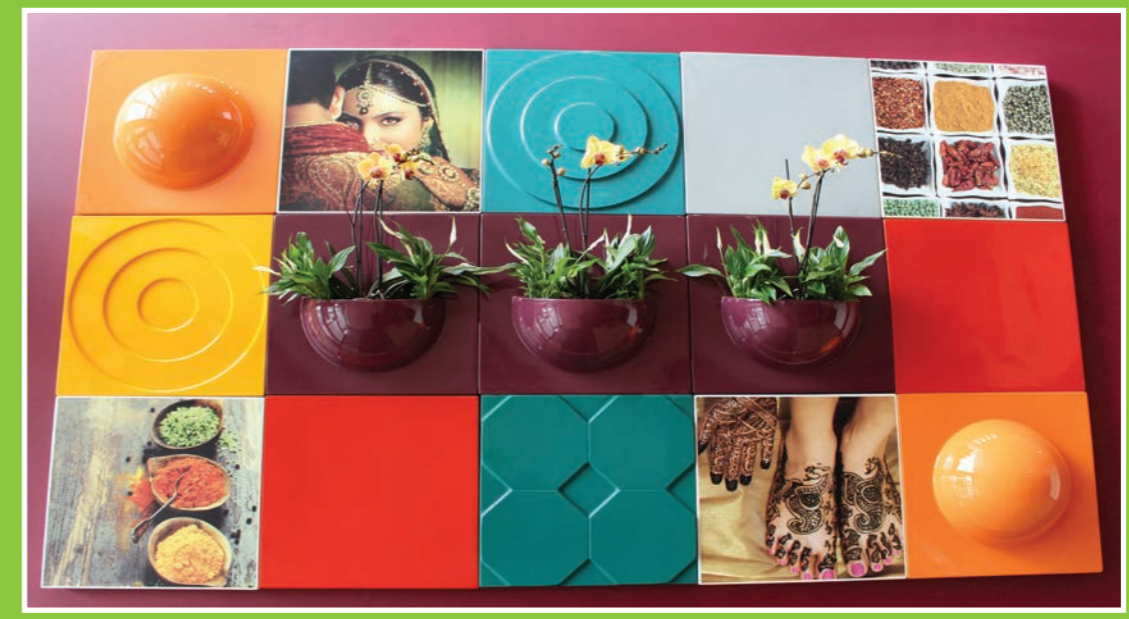
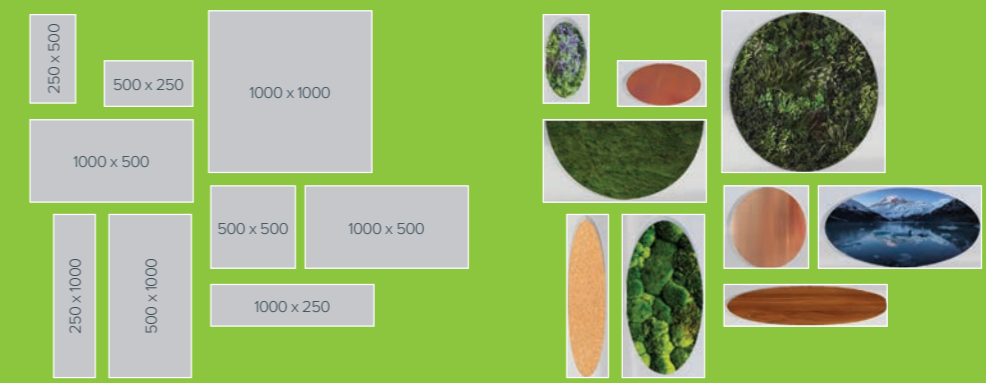
Our Feature Walls move away slightly from traditional Green Walls as they allow you to design your wall in various ways. Using fibreglass panels we can create a stunning artwork piece to match your décor and/or your brand.



The panels can be made to incorporate moss, artificial foliage, wood, an image or logo, or just a blank colourful panel. It's entirely up to you! With so many options, no Feature Wall will be the same.

To make it easier to create a design we have set sizes available, as per image, and can be arranged to your design. We can also create something exclusively bespoke for your business.

Our Feature Walls are available to purchase outright.



“ In a study sickness rates fell by **60%** in offices with plants. ”

Source: The NASA Research



ambius.co.uk
0800 037 0128


ambius
The Experts in Workspace
Plant Design